

# Crawford Performance Front Mount Intercooler Install Instructions (02-07 WRX & STI) Version 1.00

## Parts List

Item Num	Quantity	Description	Sent	Received
<b>CP-I0102</b>	<b>1</b>	<b>Crawford Performance BIG FMIC Install Kit</b>		
I0531-2	1	CP Front Mount Intercooler 02-07 STI/WRX		
P0623-1	1	Pipe – Charge #1 (over intake manifold)		
P0624-1	1	Pipe – Charge #2 (down right side of radiator)		
P0625	1	Pipe – Charge #3 (right side of intercooler)		
P0626	1	Pipe – Charge #4 (btm left side of intercooler)		
P0627	1	Pipe – Charge #5 (left head to throttle body)		
-P0655-1	1	Plate – Hood Scoop Block Off Plate (06-07 models only)		
-P0655	1	Plate – Hood Scoop Block Off Plate (02-05 models only )		
H0490	5	Hose – 2” Straight hose, Super Black		
H0493	1	Hose – 2-2.75” Transition hose, Super Black		
C0220	1	Cap – OEM By Pass Valve Plug		
C0244	11	Clamp – T-Bolt, 2” ID T Bolt Clamp		
C0248	1	Clamp – T-Bolt, 2.75” ID , Turbo Hose		
C1048	1	Cap –3/8 Rubber Cap for BPV Vacuum Line		

## Front Mount Intercooler Kit Installed



Remove OEM top mount intercooler and make sure to keep the red 90% silicon elbow and clamps from the OEM top mount intercooler. These will be needed from the turbo charge to the first Crawford Performance intercooler pipe.



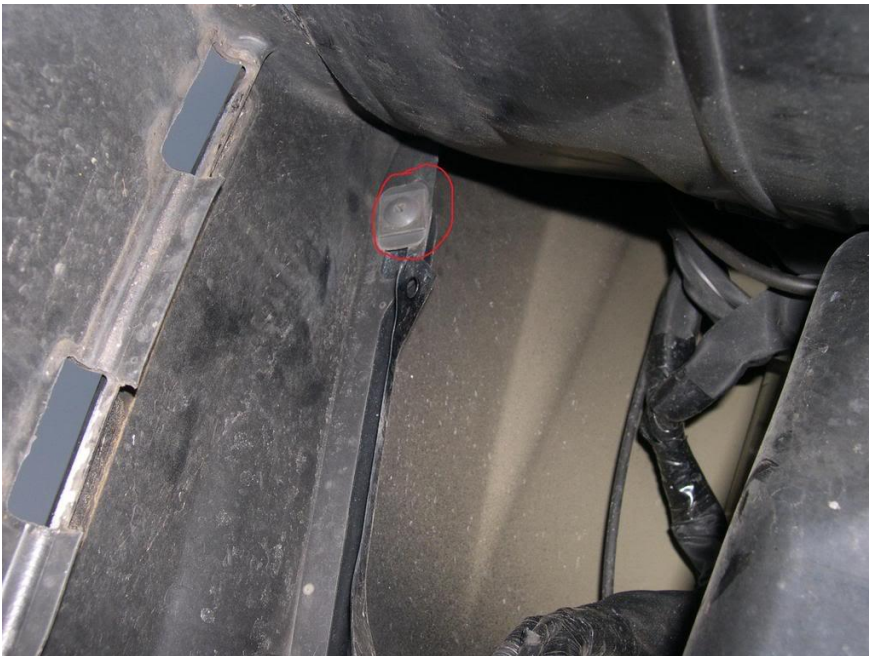
Please remove the front bumper from the vehicle. There are tabs located on the grill and these need to be pressed down in order for the grill to pull off. (Please note the plastic under tray may need to be removed if it has not been removed already from other modifications, but it can be reinstalled after the intercooler is installed)



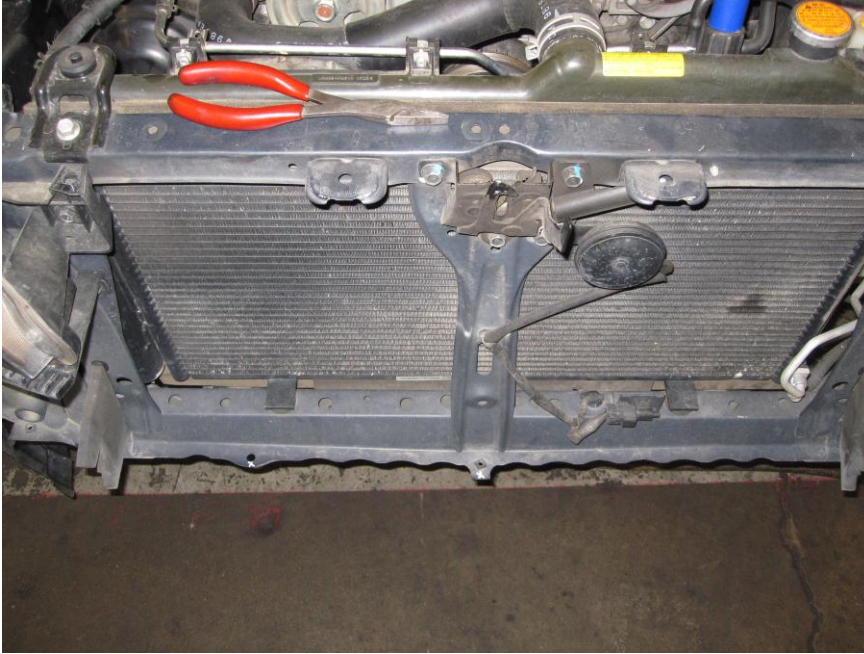
Once the grill is off there will be plastic screws that will need to be removed and the plastic clips pulled out of the bumper in order for the bumper to be pulled from the front of the vehicle.



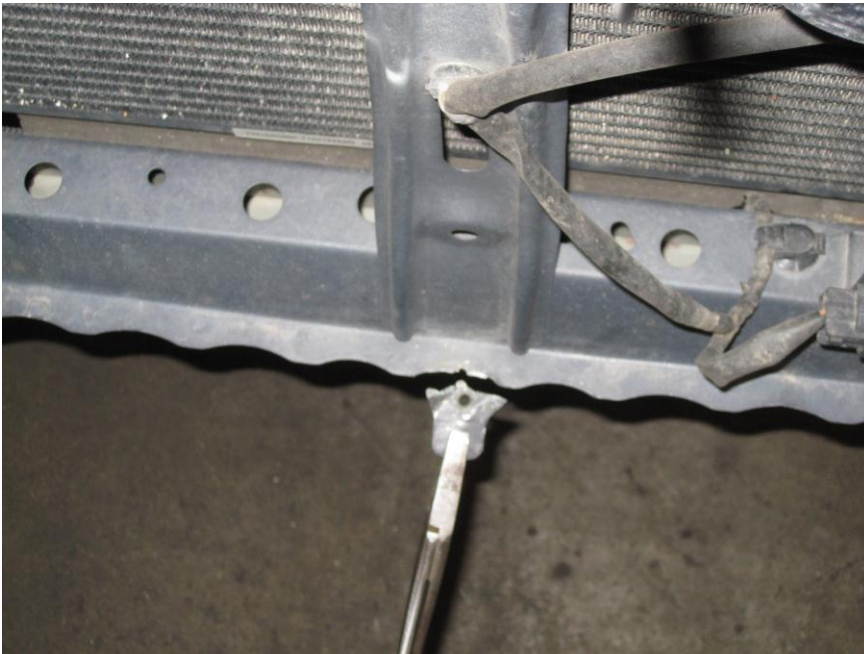
Once the clips are removed there are a couple more clips in the fender well towards the front of the vehicle that will need to be unscrewed and then remaining clips pulled from the fender liner.



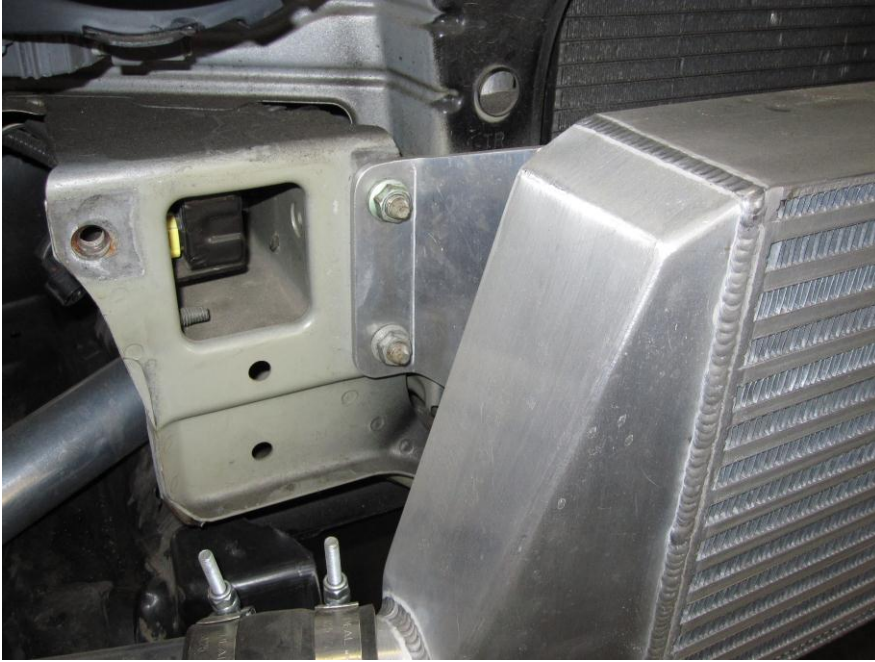
Now the bumper is removed, remove the front bumper beam which consists of four main mounting bolts on other side of the bumper beam and install the front mount intercooler core. You may need to bend back a couple tabs depending on the model year vehicle so the intercooler clears the tabs extending from the frame of the vehicle.



Breaking off this tab will not affect the integrity of the vehicle frame.



Now place the intercooler core where the bumper beam was removed from and reuse the bolts that held the bumper beam in place for the intercooler core. (Left side based on driver's view)



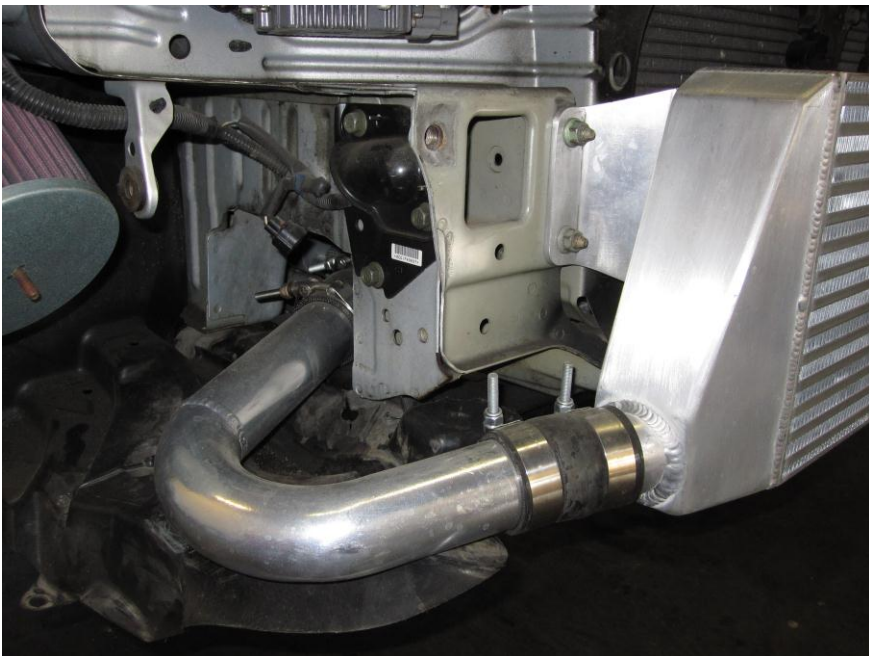
(Right side based on driver's view)



Now install the first intercooler charge pipe from the turbo down the side of the radiator as seen below. You will need to reuse the red 90 degree silicon elbow and clamps for this pipe. Please make sure to cap the BPV hole to the inlet hose and cap the vacuum line for the BPV.



Install the second (not shown, installed next to radiator from first pipe) and third intercooler pipe from attaching it to the first pipe and intercooler via two 2" silicon connectors and clamps.



Install pipe number five from the throttle body underneath the engine and through the cross member/engine hole as seen in the picture below. (Please note the heat from the headers/engine will not affect the silicon hose. This exact package has been run on over 100+ vehicles running power levels as high as 700whp in track events, rally cross events, drift events and has yet to melt or fail.)



Next please install pipe number three from the intercooler to pipe number four as seen below.



Now proceed with trimming the bumper. Photos below are sample photos from the 2008 Subaru STI but should give you an idea of what to expect for a clean cut. We would recommend cutting a straight edge along the bumper to mount up against the intercooler.

